

USB2.0 to Fast Ethernet Adapter with 3-Port USB Hub

EU-4230

User's Manual

Version 1.0 / January, 2009





Copyright© by Edimax Technology Co, LTD. all rights reserved. No part of this publication may be reproduced, transmitted, transcribed, stored in a retrieval system, or translated into any language or computer language, in any form or by any means, electronic, mechanical, magnetic, optical, chemical, manual or otherwise, without the prior written permission of this company.

This company makes no representations or warranties, either expressed or implied, with respect to the contents hereof and specifically disclaims any warranties, merchantability or fitness for any particular purpose. Any software described in this manual is sold or licensed "as is". Should the programs prove defective following their purchase, the buyer (and not this company, its distributor, or its dealer) assumes the entire cost of all necessary servicing, repair, and any incidental or consequential damages resulting from any defect in the software. Further, this company reserves the right to revise this publication and to make changes from time to time in the contents hereof without obligation to notify any person of such revision or changes.

The product you have purchased and the setup screen may appear slightly different from those shown in this QIG. For more detailed information about this product, please refer to the User's Manual on the CD-ROM. The software and specifications are subject to change without notice. Please visit our web site www.edimax.com for the update. All right reserved including all brand and product names mentioned in this manual are trademarks and/or registered trademarks of their respective holders.

Table of Contents

1. Introduction	1
Features	1
Package Contents	1
System Requirements	1
2. Installation	2
Hardware Connection	2
Driver Installation	3
On Windows 2000/XP/Server 2003/Vista	3
On MAC OS X 10.3/10.4	6
Verifying the Driver Installation	10
On windows 2000/XP/Server 2003/Vista	10
On MAC OS X 10.3/10.4	11
3. Specifications	12
4. Federal Communication Commission	13
5. CE Mark Warning	13

1. Introduction

It is a combination 10/100M Ethernet adapter and integrated standard-based 3-port USB hub all in one easy to use device. As a fully integrated USB solution, the new USB/Ethernet adapter allows users to easily connect to the Ethernet network with a complete out of the box, Plug-N-Play solution.

Features

- Complies with IEEE 802.3/802.3u standards
- Complies with USB 2.0 and backward compatible with USB1.1 with data rates 1.5/12/480 Mbps
- Built in 3 ports USB2.0 hub
- Supports 10/100Mbps auto-negotiation
- Supports bus-powered and self-power mode
- Supports Window 2000/XP/Server 2003/Vista and MAC OS 10.4.x and above

Package Contents

- USB2.0 to Fast Ethernet Adapter with 3-Port USB Hub x1
- Power Adapter x1
- Quick Installation Guide x1
- CD (Driver & Multi-language Quick Installation Guide & User Manual) x1

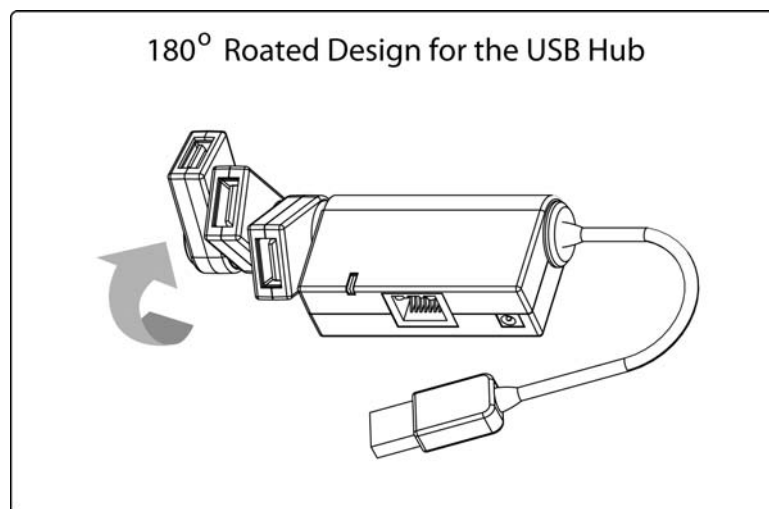
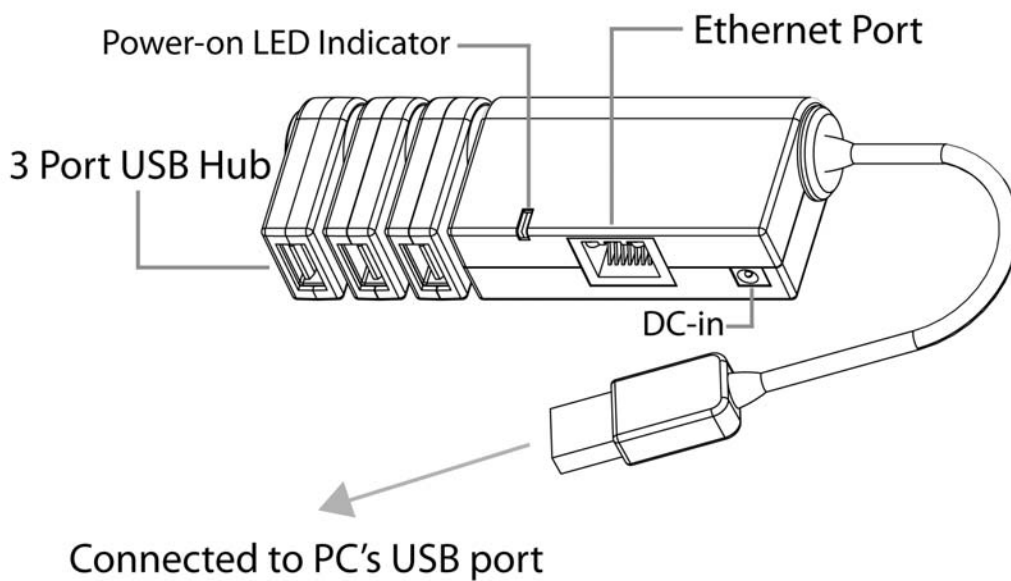
System Requirements

- CPU : Pentium III 1G above or similar
- Memory size : 256MB RAM
- One CD-ROM drive
- Hard Disk : At least 100MB available space
- One available USB port
- OS: Window 2000/XP/Server 2003/Vista or MAC OS 10.4.x and above

2. Installation

Hardware Connection

General instructions for installing the USB 2.0 3 Port Hub with Ethernet Adapter are provided below. Since the design of system may vary, refer to your system's reference manual for further information, if needed.



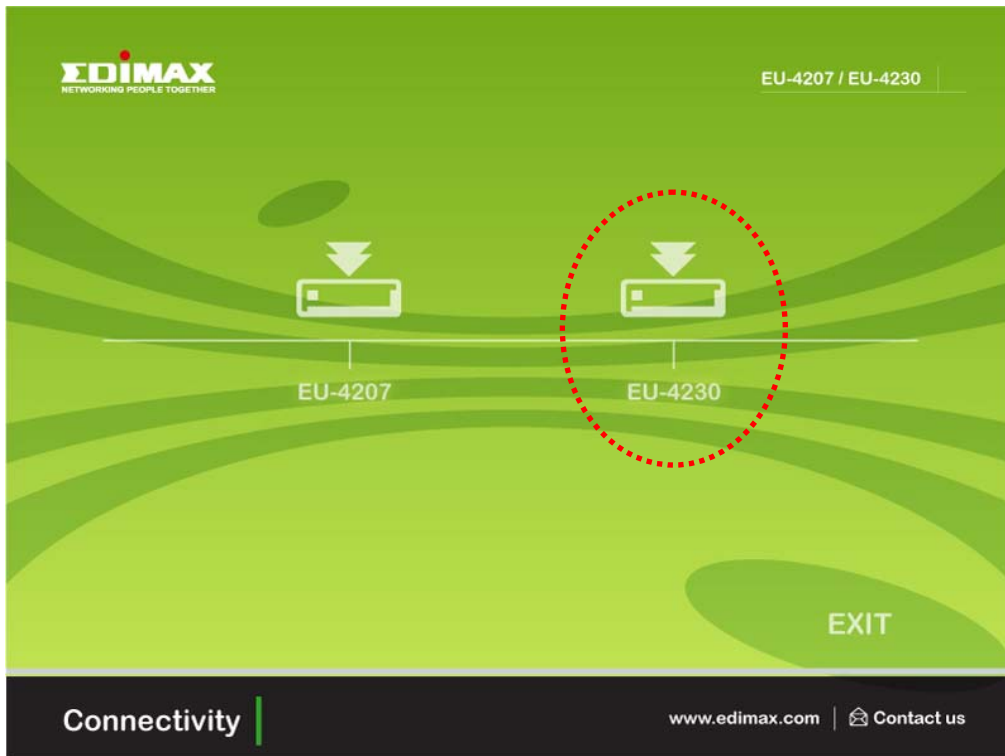
Driver Installation

On Windows 2000/XP/Server 2003/Vista

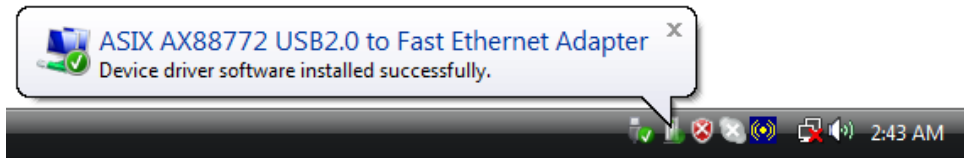
1. With your computer switched on, insert the “USB2.0 to Fast Ethernet Adapter with 3-Port USB Hub” into an available USB2.0 port of your computer. The following message will appear on your screen, Please click ‘Cancel’ and use the wizard to install driver.



2. Please insert the installation CD into your CDROM drive. The Autorun setup programs should run under Windows 2000/XP/Server 2003/Vista, or you can click on the “Browse CD” to find other OS drivers in the CD.



3. Connect the Ethernet adapter's USB end to a free USB port of your computer. Then a pop-up message will appear in the notification area indicating the installation is complete.



*Actual strings depend on your operation system. These screen shots are from Windows Vista and might vary slightly for each operation system.

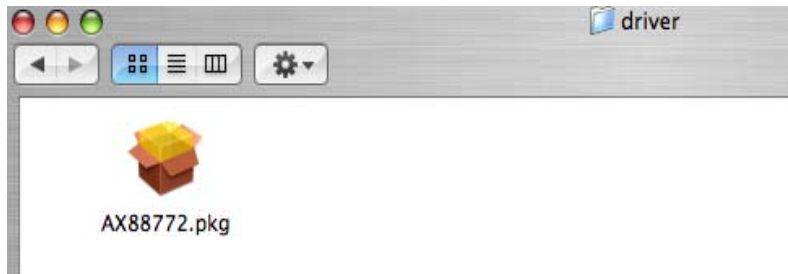
Now the installation is complete. You can connect the adapter to a network device by an Ethernet cable:

1. Connect an Ethernet cable to the Ethernet port on the adapter.
2. Connect the other end of the Ethernet cable to your network hub, switch or router.

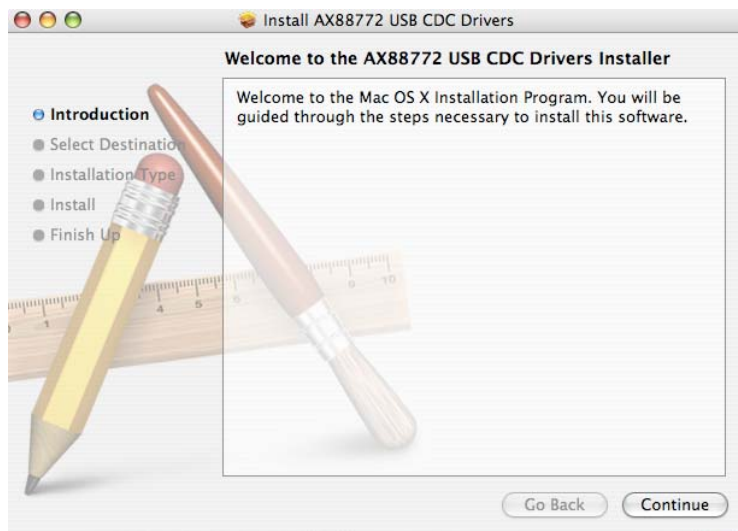
The Link LED should light up green to indicate a proper physical connection between the adapter and the network. If the Link LED doesn't light up, please verify the cable connections between all the network devices.

On MAC OS X 10.3/10.4

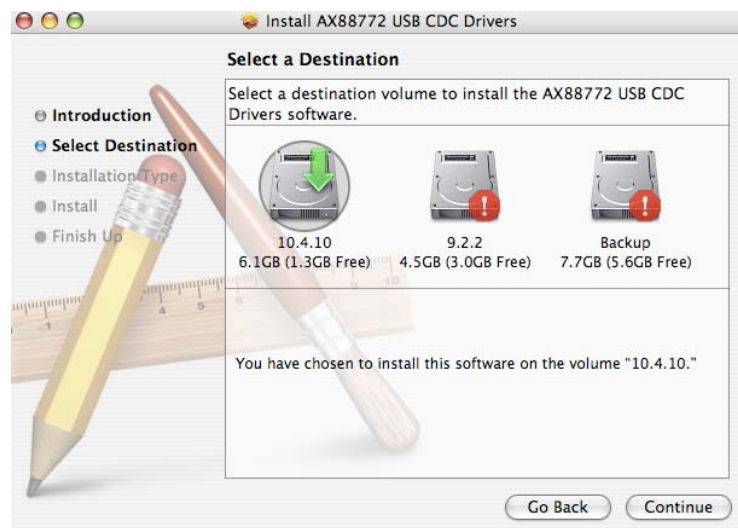
1. Insert the provided driver CD into your CD-ROM drive. Double-click the CD and navigate to the directory of **\Drivers\Mac10.x.\ AX88772.pkg**



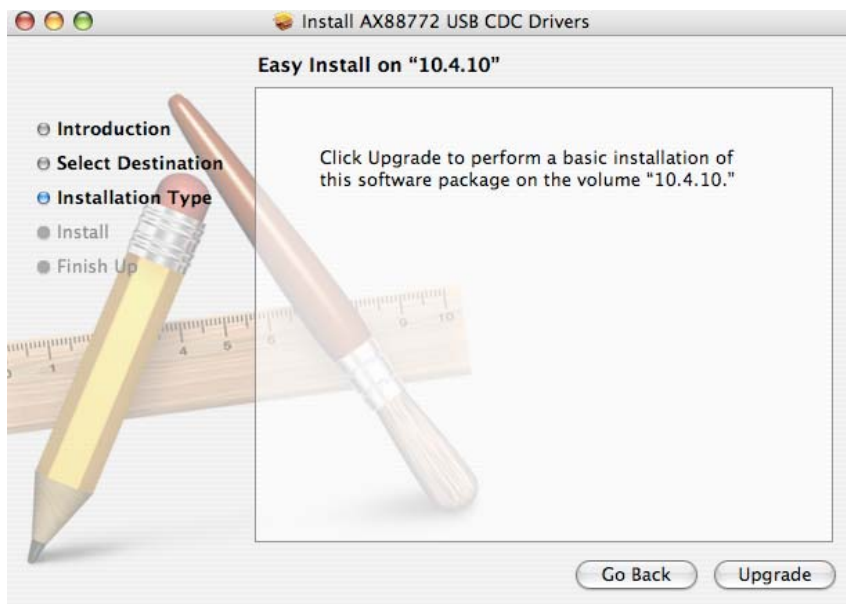
2. When the **Install AX88772 USB CDC Drivers** screen appears, please select **Continue**.



3. When the screen below appears, please choose the volume that you want to install and click **Continue**.



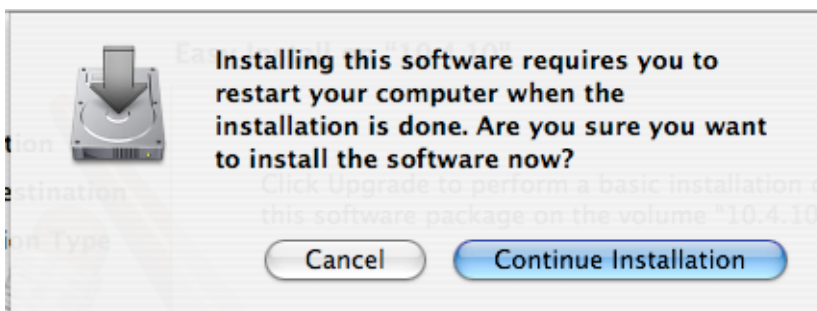
4. When the screen below appears, please click **Upgrade** to perform the software.



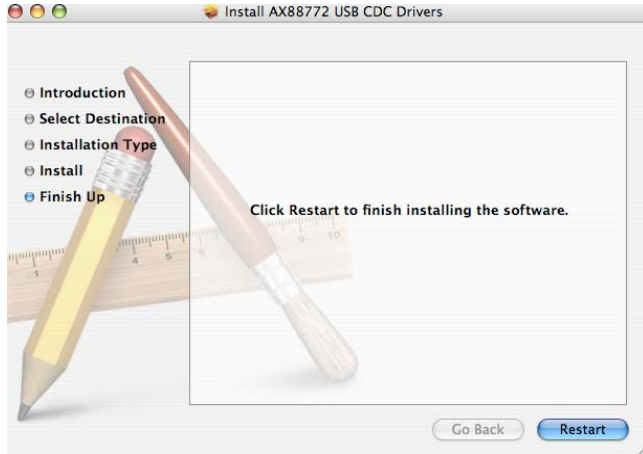
5. Please enter your password as prompted.



6. Please select **Continue Installation** to install the software when the screen below prompted.

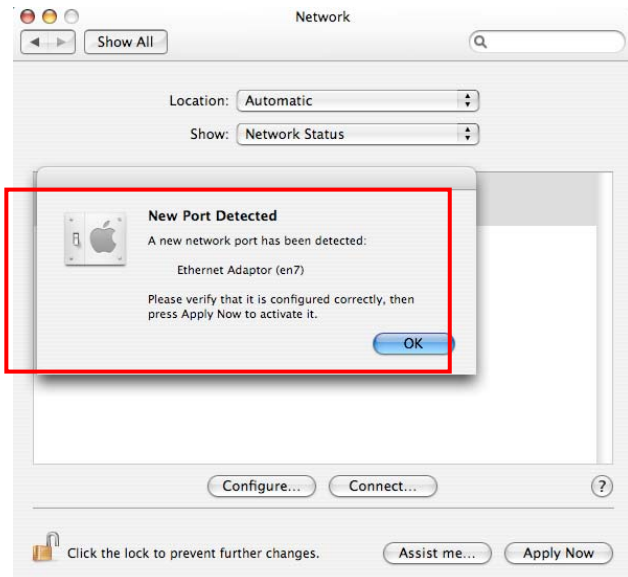


7. Please click **Restart** to reboot the Mac.

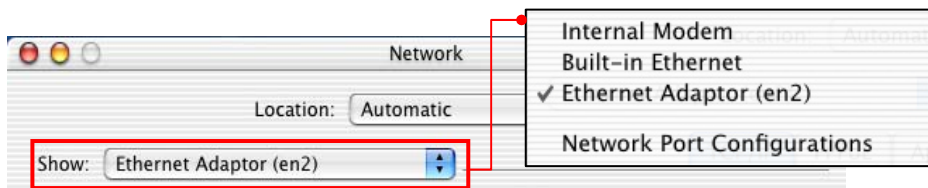


8. Connect the Ethernet adapter to a free USB port.

9. Start **System Preferences** and select **Network**, you'll see the screen as below prompted and please select **OK**.



10. You will find that a new Ethernet network interface is available. It's usually named Ethernet Adaptor (en1) or Ethernet Adaptor (en2).11.



*Actual strings depend on your operation system. These screen shots are from MAC OS X 10.4 and might vary slightly for each operation system.

Now the installation is complete. You can connect the adapter to a network device by an Ethernet cable:

1. Connect an Ethernet cable to the Ethernet port on the adapter.
2. Connect the other end of the Ethernet cable to your network hub, switch or router.

The Link LED should light up green to indicate a proper physical connection between the adapter and the network. If the Link LED doesn't light up, please verify the cable connections between all the network devices.

Verifying the Driver Installation

On windows 2000/XP/Server 2003/Vista

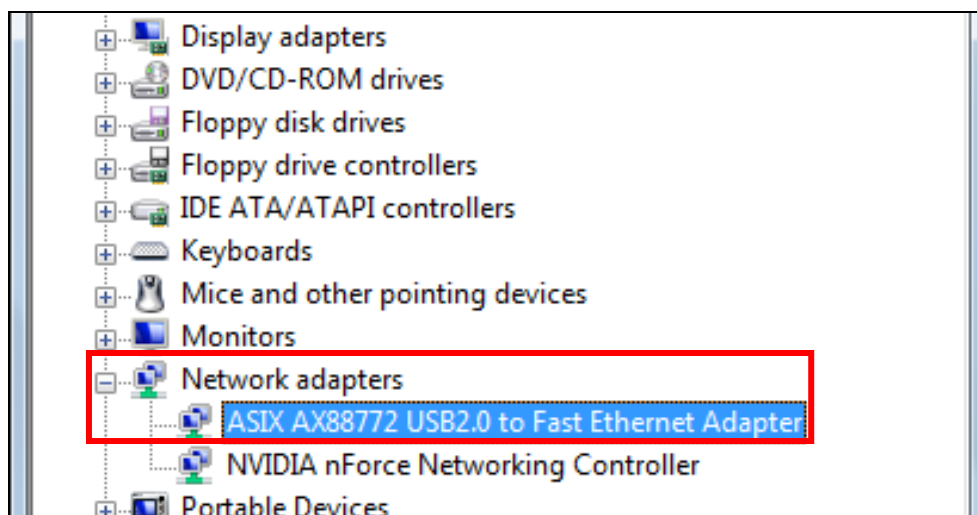
Once you finish the installation, you can open Windows **Device Manager** to verify if your Ethernet adapter is properly installed.

To access the **Device Manager**:

- On Windows **Vista**: Right-click **Computer** on the desktop and click **Properties** > **Device Manager**.
- On Windows **2000/2003/XP**: Right-click My **Computer** on the desktop and click **Properties** > **(Hardware)** > **Device Manager**.

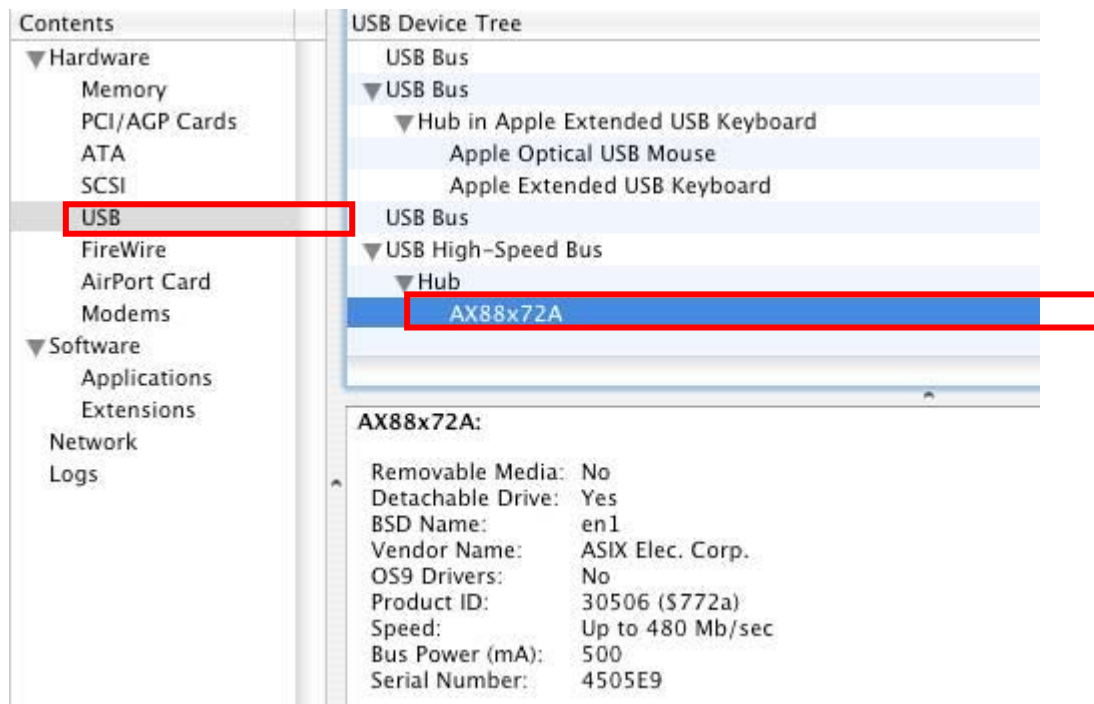
In the Network adapters group, an item named **ASIX AX88772 USB2.0 to Fast Ethernet Adapter** should be displayed.

If there is a question or exclamation mark next to that item, then the driver is not properly installed. Please delete the item, select the **Delete the driver software for this device** option (if provided), unplug the adapter from your computer and then repeat the installation steps.



On MAC OS X 10.3/10.4

Once you finish the installation, you can open **GO > Utilities > System Profile > Hardware > USB >** to verify if your Ethernet adapter is properly installed.



In the USB High-Speed Bus group, an item named **ASIXx72A** should be displayed.

3. Specifications

USB	Upstream port x 1 (USB Type A plug)
	Downstream port x 3 (USB Type A receptacles)
	Compliance : USB1.1 & USB 2.0
LAN	RJ-45 x 1 (Ethernet 10BASE-T/Fast Ethernet 100Base-TX port)
	Complies with the Full-duplex with flow control and Half-duplex with backpressure operation
Power Supply	Input : 100~240v 50Hz-60Hz Output: 5V 2.5A
LED	Blue LED for Power-on indication
	Green LED for Ethernet Connection indication
Housing	Size (Lx W x H) : 98 x 36 x 20 mm
	Material : plastic (ABS)
	Weight : 46G
Power Mode	Bus-powered : 5V 500mA
	Self-powered : 5V 2.5A
	Adapter : Input : 100~240V 50Hz ~60Hz Output : 5V/2.5A
Working Environment	Operation temperature : 0 ~ 70 degree
	Storage temperature : -10 ~ 80 degree
	Certification : FCC, CE

4. Federal Communication Commission Interference Statement

This equipment has been tested and found to comply with the limits for a Class B digital device, pursuant to Part 15 of FCC Rules. These limits are designed to provide reasonable protection against harmful interference in a residential installation. This equipment generates, uses, and can radiate radio frequency energy and, if not installed and used in accordance with the instructions, may cause harmful interference to radio communications. However, there is no guarantee that interference will not occur in a particular installation. If this equipment does cause harmful interference to radio or television reception, which can be determined by turning the equipment off and on, the user is encouraged to try to correct the interference by one or more of the following measures:

1. Reorient or relocate the receiving antenna.
2. Increase the separation between the equipment and receiver.
3. Connect the equipment into an outlet on a circuit different from that to which the receiver is connected.
4. Consult the dealer or an experienced radio technician for help.

5. CE Mark Warning

This is a class B product. In a domestic environment, this product may cause radio interference, in which case the user may be required to make adequate measures.

A CE declaration of conformity is available on www.edimax.com



EDIMAX Technology Co., Ltd.
www.edimax.com